

# Adventure Van Guide



## General

1. This is a van not a 4x4 Jeep. Please do not take this vehicle on any off road trails or rocky terrain.
2. When driving the van be sure to take corners slower than a normal car. Be cautious when driving in high cross-winds.
3. Please treat Leroy like it was your own. A lot of time and love went into making this van.
4. Lighting can be dimmed by holding the switch. DO NOT DIM THE WATER PUMP SWITCH.
5. First-aid kit, fire extinguisher, and fire proof safe can all be located in the passenger side upper cabinet nearest the bed.
6. Leroy comes equipped with carbon monoxide and fire alarms, which are inspected before every trip.
7. Have way too much fun!

## Fridge

The fridge runs on 12V with the Jackery portable solar system. The fridge will use less electricity if it is stocked with food. The divider in the fridge is what gives you a small



freezer. Take the divider out if you only want a fridge. If while closing the fridge it becomes stuck be sure the power cable behind is not pinched. BE SURE TO LATCH HOOK ON FRIDGE & STOVE DRAWER BEFORE DRIVING.

## Stove

Propane tanks can be found inside the drawer above the fridge. You can store (3) 1lb tanks and have 1 connected. We advise that you disconnect the propane tank after you are done cooking. Please try not to over boil pots, burn food or scrape the pans.



## Table Tips

MAX table weight is 30 pounds.  
Please

do not lean excessively on the table.  
When converting the table to make the bed complete the following 4 steps  
1. Loosen knob by pushing in button and rotating.

2. Take the table out of stand and set aside.

3. Loosen bottom knob on main rail (this is attached to the bench). Slide out the rail and set aside.

4. Lay the table on supports to make the bed.

KEEP TABLE IN BED POSITION WHILE DRIVING PLEASE.



## Bunkbed

To Lower and raise the bunk bed push the bed up into the ceiling and unhook the carabiners. Start with the 2 on the kitchen side of the bed and unhook (or hook) the back ones last. Try your best to not scratch walls if possible. Bunk Bed is designed mainly for children and has a weight limit of 300 lbs.



## Sink & Water Pump

The bottom switch on the backsplash turns the water on and off.



Open the sink faucet and then turn on the pump for water. When finished, turn off the pump and let pressure drain from the sink faucet. Drain grey tank before traveling. Disconnect black connector, drain and install when finished dumping water

## Plumbing

You shouldn't have to worry about plumbing unless you notice a leak. If you see a leak turn off the water pump, open the sink and let the pressure drain until the leak is found until it is fixed.



## Electrical

Fusebox and Kill switch are found under the passenger side bench. If a fuse is blown it will illuminate red and we will replace it when returned.

## Maxx Air Fan

The fan has 2 settings which can suck air into the van and blow air out of the van. We recommend sucking air in during the night for 30 min to cool the temperature and then turning it off. In almost all cases you don't need to run the fan the entire night. You can manually open the fan by turning the black knob clockwise. KEEP FAN DOWN WHILE DRIVING.



## Swivel Seat

Push the red knob under the passenger seat towards the driver's seat to begin the swivel. Be sure the seat is locked in place facing forward before you begin to drive.



## Solar System

Two solar panels are stored behind the rear seats. The Jackery can handle 1000 Watt continuous items. If you plug something into the battery bank and it doesn't turn on it is probably due to the wattage or the battery is dead. You can fully charge the Jackery from a 120V outlet in only a few hours if needed. To charge the Jackery look at these pictures. SOLAR PANELS ARE NOT WATERPROOF. DON'T LEAVE THEM IN THE RAIN.





## 120V Plugs

At the bank of the van you will find (2) 120V outlets which can be plugged into shore power. You can use as much electricity from the outlets as desired. The connection plug is found directly below the outlet under the body of the van.



## USB Plugs

To turn these on or off simply touch the power logo on the device

## Road Shower

To operate the road shower take the nozzle out of the velcro strap (LEAVE BACK VELCRO STRAP ATTACHED).

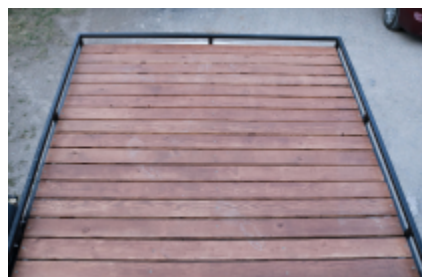
Shower will be pressurized and heated from the sun.

If you run out of water during your trip you can attach a hose to the quick connect valve found at the back of the road shower. Inside pressure should be around 55 PSI.



## Roof Rack

The roof rack is built to support 4 people at a time. DO NOT JUMP ON ROOF SLATS. You can fit 2 people sleeping above if needed.



## What Comes With Your Stay?

### ***Van Inventory***

#### **Up Front**

- Phone mount
- Journal
- How-to binder
- Seat Covers (2)

#### **Linen**

- Towels (4)
- Sheets (2 sets)
- Fitted Sheet (1)
- Pillowcases (4)
- Fuzzy Blankets (2)
- Comforter (1)
- Sleeping Bag (1)
- Pillows (4)
- Cushions (2 large, 2 small)
- Curtain sets (4)
- Curtain rods (4)

#### **Upper Drawers**

- **Games**
  - Apples to Apples (1)
  - Monopoly (1)
  - Checkers (1)
  - Card Decks (4)
  - Monopoly Deal (1)
  - Cover Your Assets (1)
  - UNO (1)
- Safe (1)

#### **Kitchen**

- **Wall**
  - Steak knives (2 big, 2 small)
  - Kitchen shears (1)
  - Spice Jars (7)
- **Top Drawer**
  - Butter knives (8)
  - Small spoons (8)
  - Large Spoons (8)
  - Small Forks (8)
  - Large Forks (8)
  - Can opener (1)
  - Whisk (1)
  - Can opener (1)

- Tongs (1)
  - Ladle (1)
  - Various large serving spoons (4)
  - Spatula (2)
  - Bowl Scraper (1)
- **Middle Drawer**
  - Dish Towels (4)
  - Hand Towels (4)
  - Wash Cloths (3)
  - Drying Pad (1)
  - Scrub Pads (2)
  - Oven mitts (2)
  - Hot plates (2)
  - Bowls (6)
  - Cutting Board (1)
  - Plates (8)
  - Cups (6)
- **Bottom Drawer**
  - Strainer (1)
  - Skillet (1)
  - Small pot with lid (1)
  - Large pot with lid (1)
- **Sink**
  - Grey water tank (1)
  - Sink liner (1)
  - Non-slick pad (1)
  - Sponge (1)
  - Dish Soap (1)
- **Stove Drawers**
  - Canola Oil (1)
  - Trash Can (1)
  - Measuring cups (1 Set)
  - Measuring spoons (1 Set)
  - Soup spoon holder (1)
  - Large metal bowls (2)
  - Refrigerator w/ freezer separator (1)
  - Fridge battery adapter (1)
  - Roll of trash bags (1)
  - Propane tanks (3)
  - Stove hose (1)
  - Stove adaptor for hose (1)
  - Stove cover (1)

## Electrical

- Fan remote (1)
- Light remotes (2)
- Carbon monoxide detector (1)
- Propane heater (1)

- **Jackery**
  - Battery (1)
  - Solar Panels (2)
  - Accessory Kit (1)
    - AC Adapter (1)
    - Wall Charger (1)
    - Car Charger (1)
    - Jackery Box w/ Instructions (1)
    - Carrying Case (1)

#### **Miscellaneous**

- Table (1)
- Table Arm (1)
- Paper towel rack (1)
- Welcome mat (1)
- Shower stand (1)
- Smoke Detector (1)
- First Aid Kit (1)
- Fire Extinguisher (1)
- Coffee Maker